



# PokerTracker<sup>TM</sup> 3

## Cereus Network Configuration Guide

Product Version: 3.00 Build 5

Document Version: 1.01

Modified: December 29, 2009

## Contents

Overview .....	3
Auto Importing Hand Histories .....	4
Configuring Preferred Seating.....	5
Manually Importing Hand Histories.....	6
PokerTracker™ Help & Support .....	6

## Overview

This guide is intended for users who wish to manually configure PokerTracker3 to import hand histories from sites on the Cereus Network (Absolute Poker and Ultimate Bet) in the event that hand histories are not automatically configured for import.

For information on installing and setting up PokerTracker3, see the *PokerTracker3 Quick Start Guide*.

## Auto Importing Hand Histories

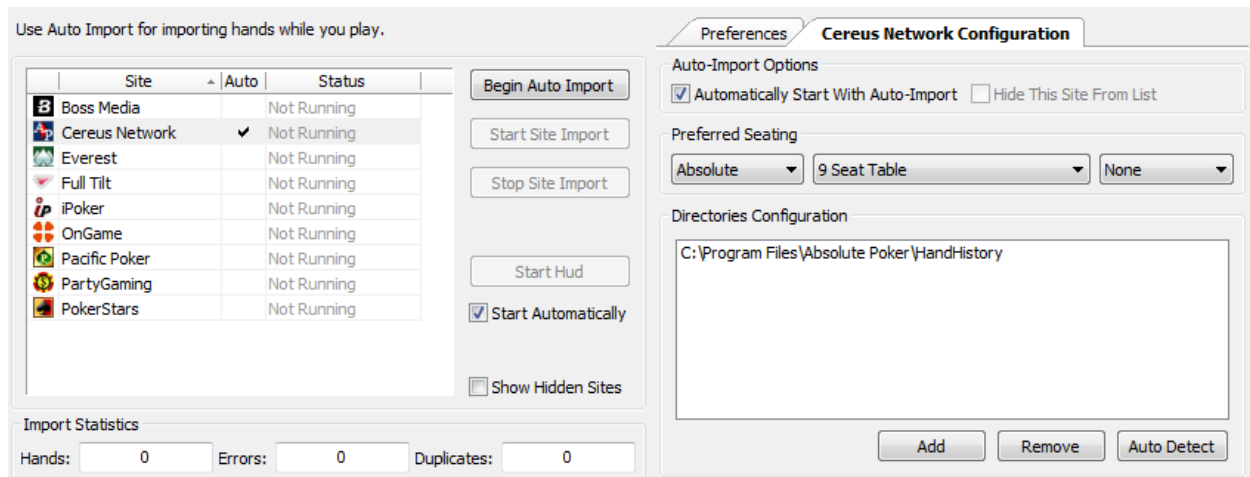
Your Cereus poker software will automatically save hand history files as you play, and PokerTracker 3 should auto-detect the folder they are written to.

On the **Auto Import** tab, select **Cereus Network** from the site list on the left hand side, then click the **Cereus Network Configuration** tab to the right.

**Tip:** If you do not see Cereus Network listed, check the **Show Hidden Sites** option.

If you do not see your hand history folder listed, click the **Auto Detect** button. This should add the correct folder to the **Directories Configuration**. If it doesn't, you can manually select the folder that they are being written to using the **Add** button.

If you play at more than one Cereus site, make sure that all of your sites' hand history folders are listed here.

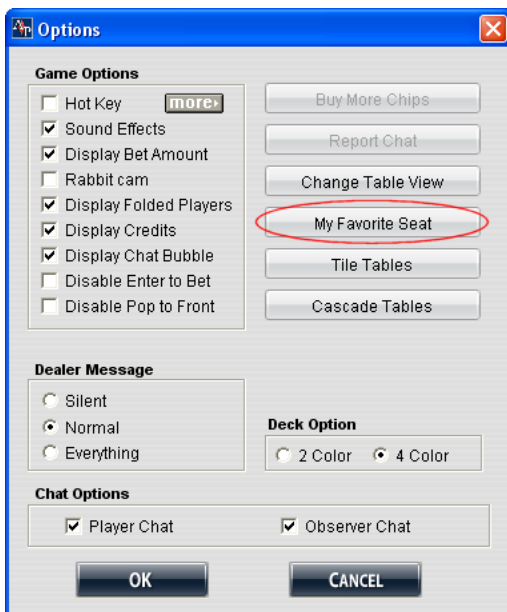


If you wish PokerTracker 3 to start importing hands from Cereus whenever you start auto importing, enable the **Automatically Start With Auto-Import** option.

## Configuring Preferred Seating

If you use the **Preferred Seating** option in your Cereus poker software (so that you are always shown in the same seat at every table) then you need to configure PokerTracker 3 to the same seat. Seat numbers start with 1 at the one o'clock position (9max) and at the twelve o'clock position (6max) on the table and work clockwise.

To configure your preferred seat in the Cereus software, open a table and click the **Options** menu then click **My Favorite Seat**. On the following window, select the table size and then choose your preferred seat.



## Manually Importing Hand Histories

If you have a lot of hand histories you wish to import you should use the **Manual Import** tab instead of Auto Import. You can use the buttons to either **Import From File(s)** or **Import From Directory**.

If you have any missing hand histories, you can request that they be sent to you by email from your Cereus software. **My Account -> Hand History -> Request Hand History via Email...**

To import these into PokerTracker 3 use the **Import From Email** button on the **Manual Import** tab.

## PokerTracker™ Help & Support

There are numerous help documents and tutorials to assist you in configuring and using PokerTracker. If you cannot find the answer you need via these resources, please search the forums. If your question or problem is not addressed you should then contact support using the PokerTracker Support system.

### *PokerTracker 3 - Tutorials & Help Documentation*

<http://www.pokertracker.com/products/PT3/docs/>

### *PokerTracker Forums*

<http://www.pokertracker.com/forums/>

### *PokerTracker Support system*

<https://www.pokertracker.com/support/>

© 2009 PokerTracker Software, LLC. All rights reserved. PokerTracker and the PokerTracker logo are trademarks or registered trademarks of PokerTracker Software, LLC. All product names mentioned herein are trademarks or registered trademarks of their respective owners. The products described in this document are protected by U.S. Patents, foreign patents, or pending applications.