



PokerTrackerTM 3

Entraction (B2B) Configuration Guide

Product Version: 3.00 Beta 26

Document Version: 1.00

Modified: March 21, 2009

Contents

Overview	3
Auto Importing Hand Histories	4
Manually Importing Hand Histories	5
PokerTracker™ Help & Support	5

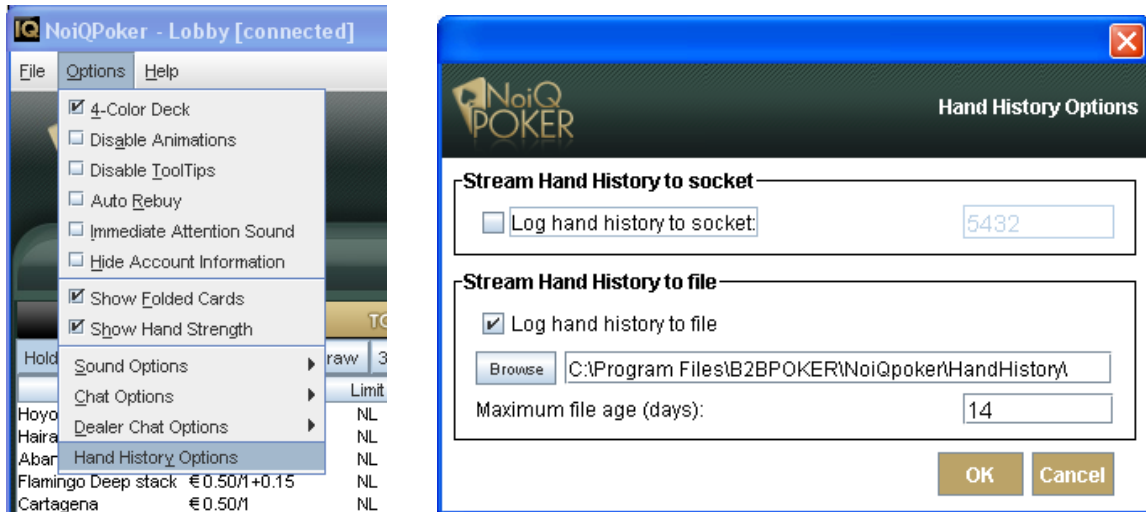
Overview

This guide is intended for users who wish to manually configure PokerTracker3 to import hand histories from sites on the Entraction Network (B2B) in the event that hand histories are not automatically configured for import.

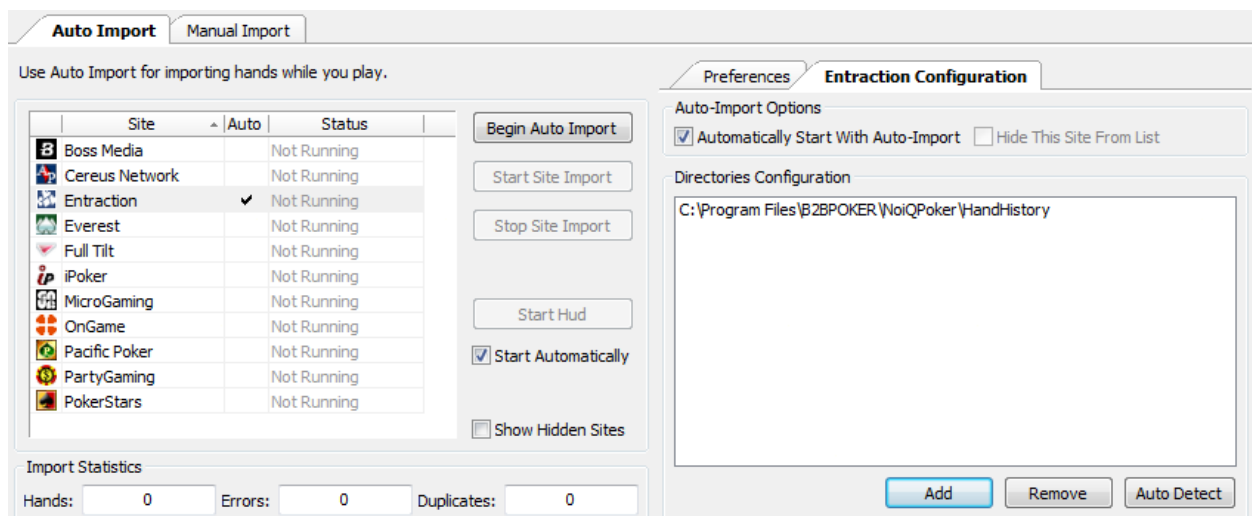
For information on installing and setting up PokerTracker3, see the [PokerTracker3 Quick Start Guide](#).

Auto Importing Hand Histories

PokerTracker 3 may not be automatically configured to import hand histories from Entraction therefore you will need to configure your Entraction poker software to save hand history files as you play. To do this, you must access the **Hand History** Options window through the **Options** menu and enable the **Log hand history to file** option.



On the **Auto Import** tab in PokerTracker 3, select **Entraction** from the site list on the left hand side then click the **Entraction Configuration** tab on the right.



Tip: If you do not see Entraction listed, check the **Show Hidden Sites** option.

If you do not see your hand history folder listed, click the **Auto Detect** button. This should add the correct folder to the **Directories Configuration**. If it doesn't, you can manually select the folder using the **Add** button.

If you play at more than one Entraction site, make sure that all of your sites' hand history folders are listed here.

If you wish for PokerTracker 3 to start importing hands from Entraction whenever you start auto importing, enable the **Automatically Start with Auto-Import** option.

Manually Importing Hand Histories

If you have a lot of hand histories you wish to import you should use the **Manual Import** tab instead of Auto Import. You can use the buttons to either **Import From File(s)** or **Import From Directory**.

PokerTracker™ Help & Support

There are numerous help documents and tutorials to assist you in configuring and using PokerTracker. If you cannot find the answer you need via these resources, please search the forums. If your question or problem is not addressed you should then contact support using the PokerTracker Support system.

PokerTracker 3 - Tutorials & Help Documentation

<http://www.pokertracker.com/products/PT3/docs/>

PokerTracker Forums

<http://www.pokertracker.com/forums/>

PokerTracker Support system

<https://www.pokertracker.com/support/>

© 2009 PokerTracker Software, LLC. All rights reserved. PokerTracker and the PokerTracker logo are trademarks or registered trademarks of PokerTracker Software, LLC. All product names mentioned herein are trademarks or registered trademarks of their respective owners. The products described in this document are protected by U.S. Patents, foreign patents, or pending applications.