



PokerTrackerTM 3

Everest Configuration Guide

Product Version: 3.00 Build 5

Document Version: 1.01

Modified: July 26, 2009

Contents

Overview	3
Auto Importing Hand Histories	4
Configuring Everest	4
Configuring PokerTracker 3 Auto Import	4
Manually Importing Hand Histories	6
PokerTracker™ Help & Support	7

Overview

This guide is intended for users who wish to manually configure PokerTracker3 to import hand histories from Everest in the event that hand histories are not automatically configured for import.

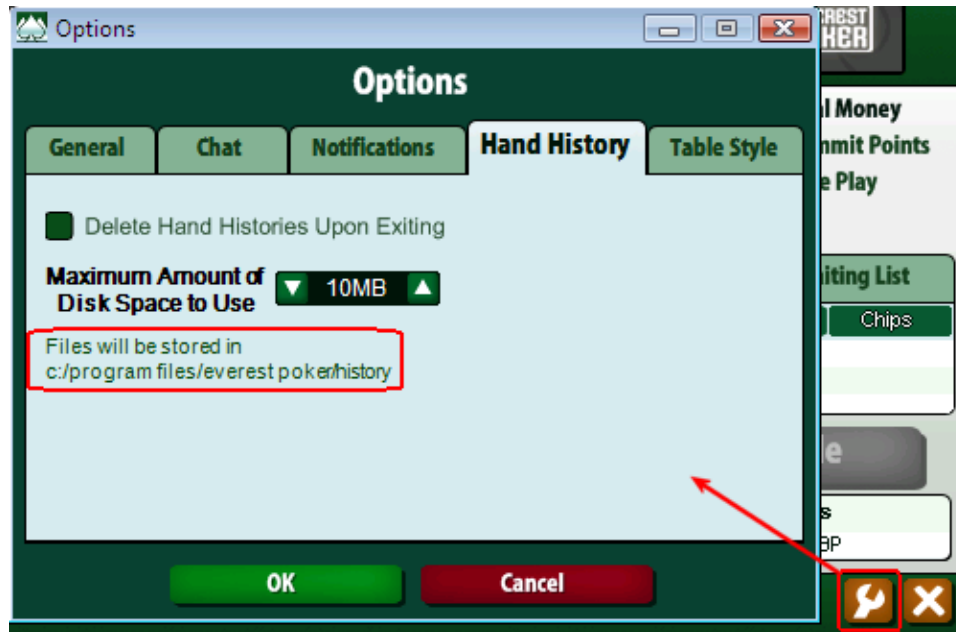
For information on installing and setting up PokerTracker 3, see the [PokerTracker 3 Quick Start Guide](#).

Auto Importing Hand Histories

Configuring Everest

Your Everest poker software will automatically save hand history files as you play, and PokerTracker 3 should auto-detect the folder they are written to.

To see where the hand histories are being saved on your local computer, open the **Options** window and view the **Hand History** tab.

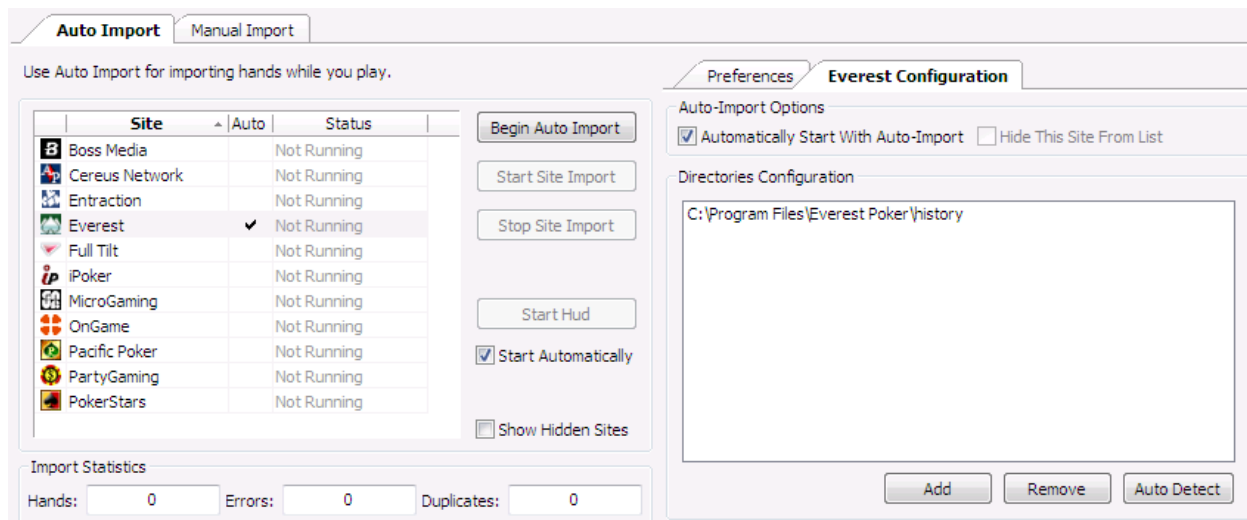


Configuring PokerTracker 3 Auto Import

On the **Auto Import** tab, select **Everest** from the site list on the left hand side, then click the **Everest Configuration** tab to the right.

Tip: If you do not see Everest listed, check the **Show Hidden Sites** option.

If you do not see your hand history folder listed, click the **Auto Detect** button. This should add the correct folder to the **Directories Configuration**. If it doesn't, you can manually select the folder that they are being written to using the **Add** button.



If you wish PokerTracker 3 to start importing hands from Everest whenever you start auto importing, enable the **Automatically Start With Auto-Import** option.

NOTE: The Everest software deletes and recreates the hand history folder every time you start the software so you need to start the Auto Import in PT3 *after* you play the first hand in each session. This only applies to starting Auto Import the first time after you start the Everest software – while it is running you can stop and start Auto Import whenever you like.

Manually Importing Hand Histories

If you have a lot of hand histories you wish to import you should use the **Manual Import** tab instead of Auto Import. You can use the buttons to either **Import From File(s)** or **Import From Directory**.

If you have any missing hand histories, you can request that they be sent to you by email from your Cereus software. **My Account -> Hand History -> Request Hand History via Email...**

To import these into PokerTracker 3 use the **Import From Email** button on the **Manual Import** tab.

PokerTracker™ Help & Support

There are numerous help documents and tutorials to assist you in configuring and using PokerTracker. If you cannot find the answer you need via these resources, please search the forums. If your question or problem is not addressed you should then contact support using the PokerTracker Support system.

PokerTracker 3 - Tutorials & Help Documentation

<http://www.pokertracker.com/products/PT3/docs/>

PokerTracker Forums

<http://www.pokertracker.com/forums/>

PokerTracker Support system

<http://www.pokertracker.com/support/>

© 2009 PokerTracker Software, LLC. All rights reserved. PokerTracker and the PokerTracker logo are trademarks or registered trademarks of PokerTracker Software, LLC. All product names mentioned herein are trademarks or registered trademarks of their respective owners. The products described in this document are protected by U.S. Patents, foreign patents, or pending applications.