



# PokerTracker<sup>TM</sup> 3

## PartyPoker Configuration Guide

Product Version: 3.00 Build 4

Document Version: 1.01

Modified: April 4, 2009

## Contents

Overview .....	3
Configuring Your Hand Histories at PartyPoker .....	4
Configuring Preferred Seating at PartyPoker .....	5
Auto Importing Hand Histories .....	6
Manually Importing Hand Histories .....	7
PokerTracker™ Help & Support .....	8

## Overview

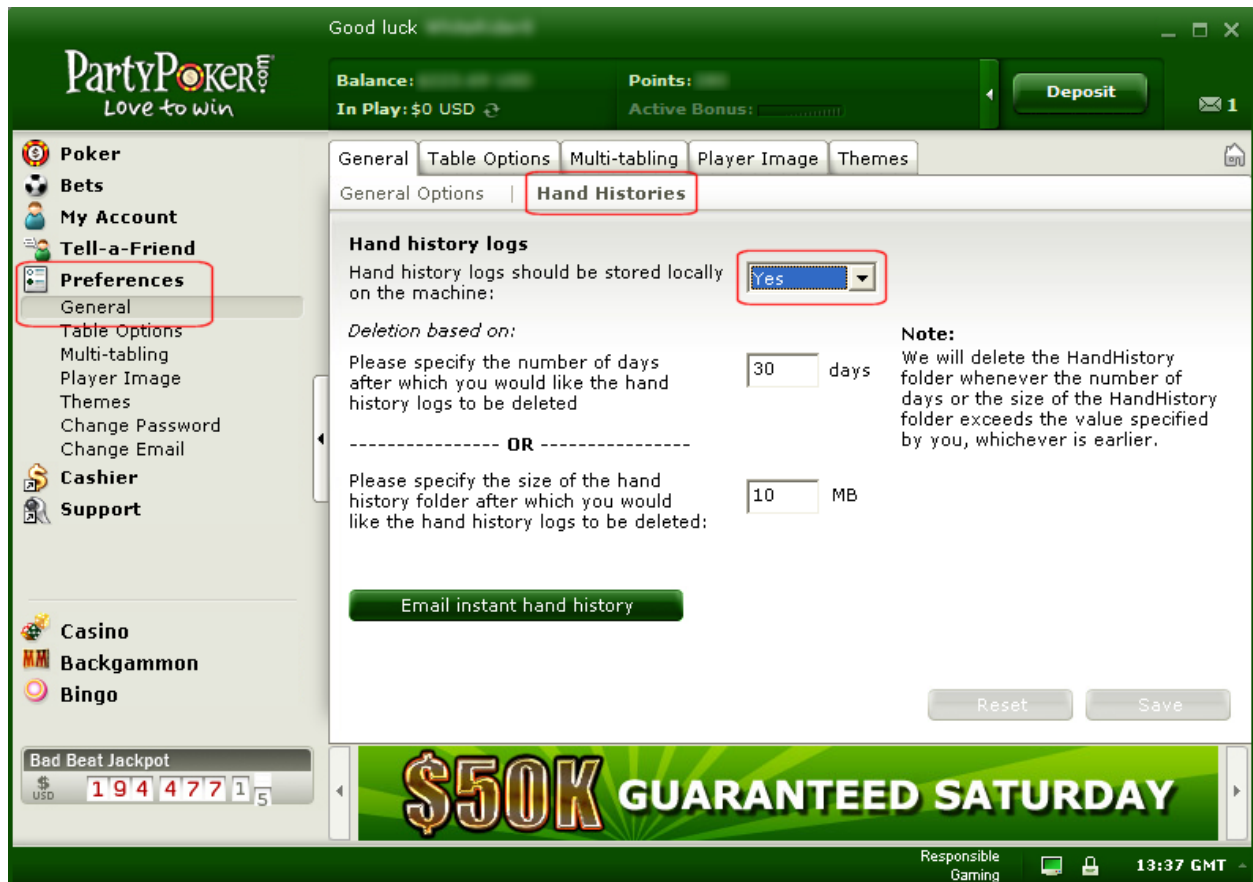
This guide is intended for users who wish to manually configure PokerTracker 3 to import hand histories from sites on the PartyGaming network in the event that hand histories are not automatically configured for import.

For information on installing and setting up PokerTracker3, see the [PokerTracker3 Quick Start Guide](#).

***Note that PartyPoker is referred to as PartyGaming where applicable.***

## Configuring Your Hand Histories at PartyPoker

You need to configure your Party Poker software to save hand history files as you play. You need to access the **Hand Histories** preferences by selecting **Preferences** on the left and then **General -> Hand Histories** on the right.



Here you need to select **Yes** to have the hand history logs stored locally on your machine.

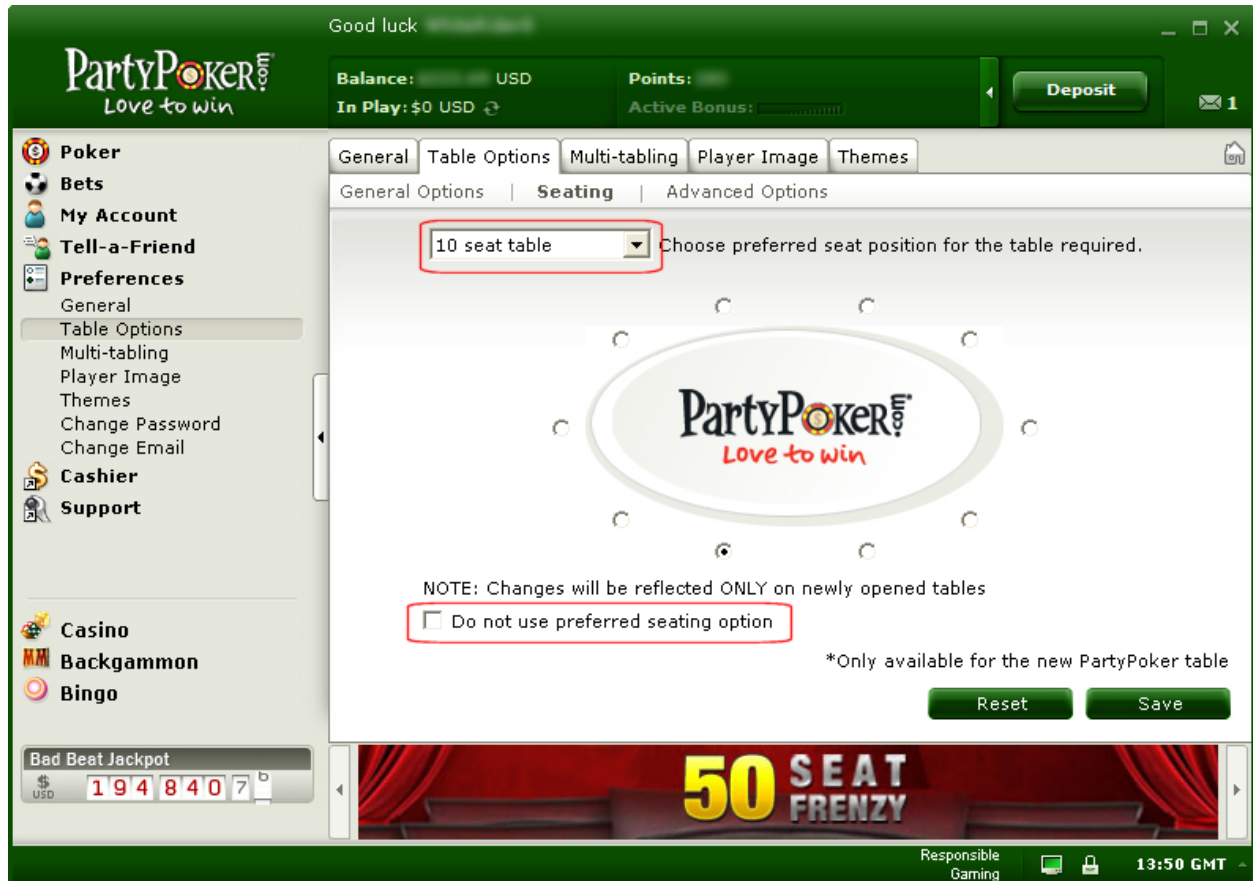
It does not matter how long you store them for (as long as you import them into PokerTracker 3 before they expire) because once PokerTracker 3 has imported them they will be moved to the 'processed' folder (as long as the 'Move Processed Files' option is enabled on the Auto Import tab).

## Configuring Preferred Seating at PartyPoker

To configure your preferred seat in the Party Poker software select **Preferences** on the left and then **Table Options** -> **Seating** on the right. Select the table size and choose your preferred seat for that table size.

If you wish to not use preferred seating then disable the **Do not use preferred seating option** checkbox.

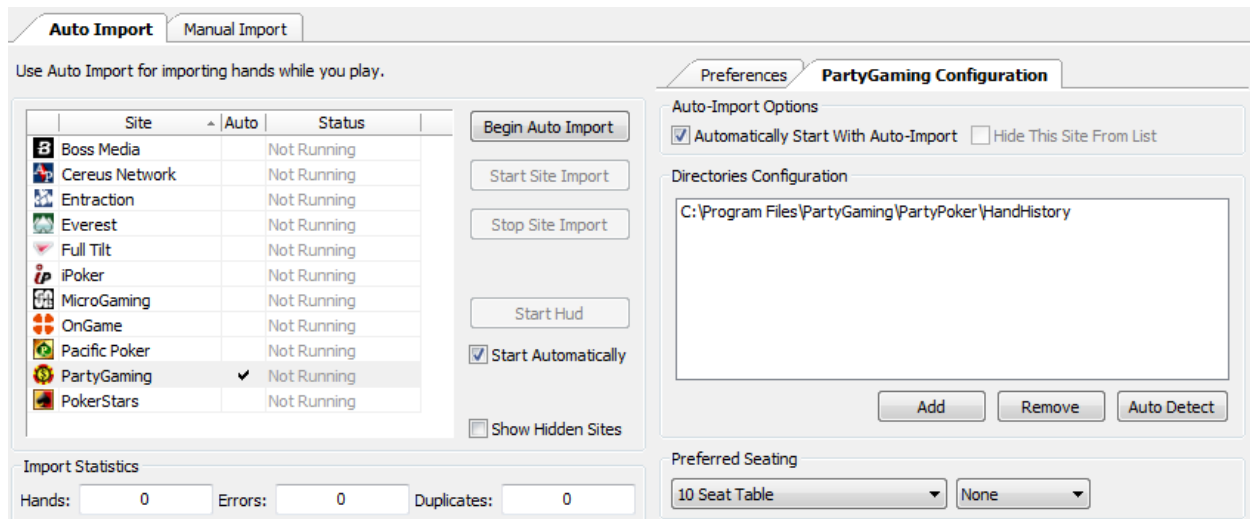
**Note:** If you disable preferred seating then you must disable it in PokerTracker 3 as well.



## Auto Importing Hand Histories

On the **Auto Import** tab in PokerTracker 3, select **PartyGaming** from the site list on the left hand side, then click the **PartyGaming Configuration** tab to the right.

**Tip:** If you do not see PartyGaming listed, check the **Show Hidden Sites** option.



If you do not see your hand history folder listed, click the Auto Detect button. This should add the correct folder to the **Directories Configuration**. If it doesn't, you can manually select the folder using the **Add** button. If you play on more than one PartyGaming site, make sure that all of your sites' hand history folders are listed here.

If you wish PokerTracker 3 to start importing hands from PartyGaming whenever you start auto importing, enable the **Automatically Start With Auto-Import** option.

If you use the Preferred Seating option in your Party Poker software (so that you are always shown in the same seat at every table) then you need to configure PokerTracker 3 to the same seat using the **Preferred Seating** section of the **PartyGaming Configuration** tab.

Seat numbers start with 1 in the one o'clock position on the table and work clockwise.

## Manually Importing Hand Histories

If you have a lot of hand histories you wish to import you should use the **Manual Import** tab instead of Auto Import. You can use the buttons to either **Import From File(s)** or **Import From Directory**.

## **PokerTracker™ Help & Support**

There are numerous help documents and tutorials to assist you in configuring and using PokerTracker. If you cannot find the answer you need via these resources, please search the forums. If your question or problem is not addressed you should then contact support using the PokerTracker Support system.

### *PokerTracker 3 - Tutorials & Help Documentation*

<http://www.pokertracker.com/products/PT3/docs/>

### *PokerTracker Forums*

<http://www.pokertracker.com/forums/>

### *PokerTracker Support system*

<https://www.pokertracker.com/support/>

© 2009 PokerTracker Software, LLC. All rights reserved. PokerTracker and the PokerTracker logo are trademarks or registered trademarks of PokerTracker Software, LLC. All product names mentioned herein are trademarks or registered trademarks of their respective owners. The products described in this document are protected by U.S. Patents, foreign patents, or pending applications.