



PokerTrackerTM 3

Database Management & Maintenance Guide

Product Version: 3.00 Beta 27

Document Version: 1.01

Modified: May 3, 2009

Contents

Overview	3
Database Management.....	3
Setting the Active Database.....	4
Setting the Default Database	4
Adding a Database	4
Removing a Database	5
Deleting a Database	5
Converting a PT2 Database	5
Database Maintenance - Housekeeping	6
Analyze.....	7
Cluster	7
Vacuum	8
Update Cache.....	8
Multiple Databases	8
Played vs.Observed Hands.....	8
PokerTracker™ Help & Support	9

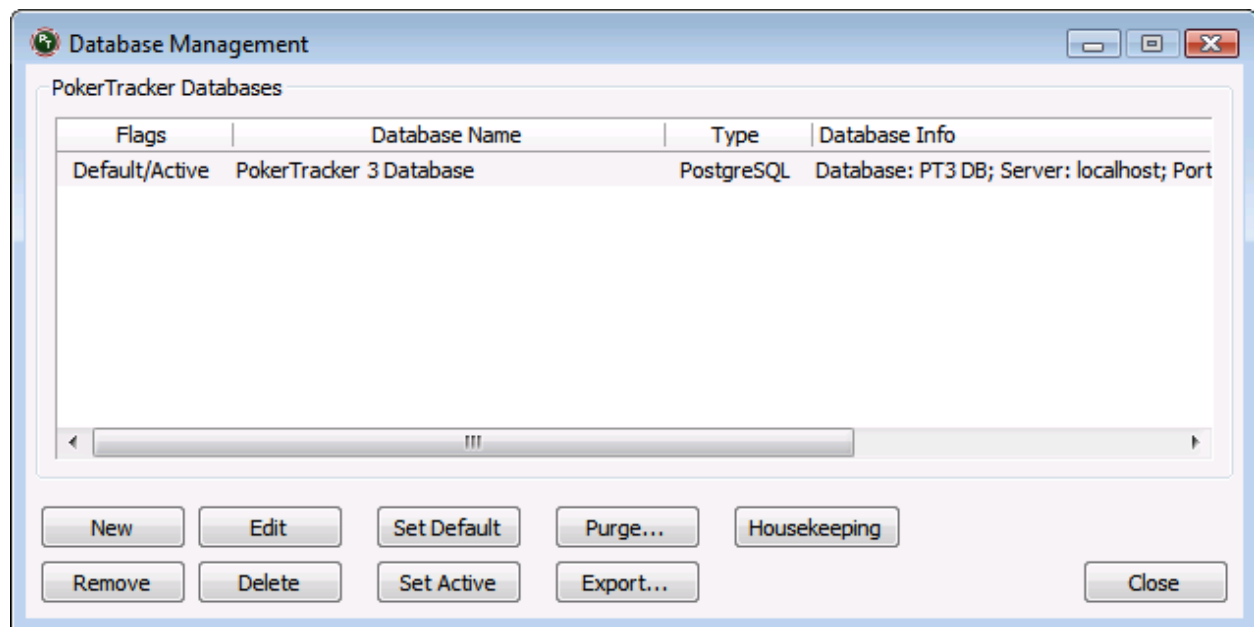
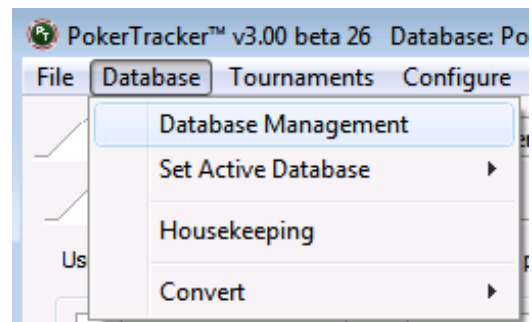
Overview

The central component of PokerTracker™ is the database. The PokerTracker™ development team spent an extraordinary amount of time analyzing, testing, and comparing several different database solutions. In the end, PostgreSQL was the clear winner. To ensure that PokerTracker™ is running efficiently, it is extremely important that you regularly maintain your database(s).

Database Management

The PokerTracker 3 database was designed to handle millions of hands so there is no need to create multiple databases for certain sites, limits, etc. One large database should be all that is required. The only time that a second database would be needed is if you opt to store observed hand histories in one database and played hands in another database which is discussed further in the [Played vs.Observed Hands](#) section of this document.

To manage your databases select **Database** in the main menu then **Database Management**. A new window will appear titled **Database Management**.



Setting the Active Database

The *Active* database is the database that hands are imported into (unless otherwise specified) and the database that stats are retrieved from for viewing. To set the active database, select **Database** from the main menu, then select **Set Active Database**, and finally select the database name you want set as active. Another method to set the active database is to select it in the **Database Management** window and click the **Set Active** button.

Setting the Default Database

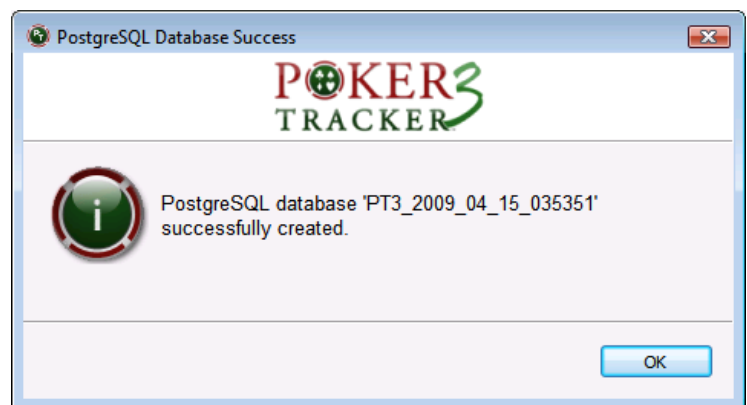
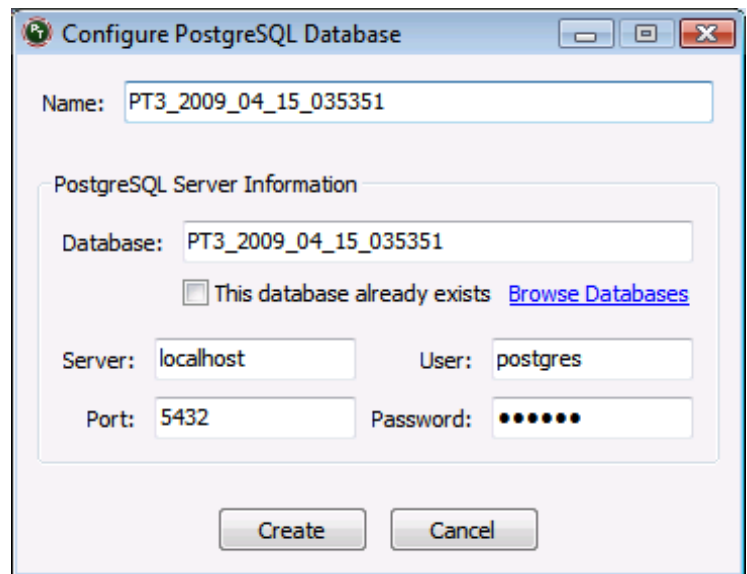
The *Default* database is the database that is set as *Active* every time that you start PokerTracker. To set the default database, left click and select the database name in the **Database Management** window then click the **Set Default** button.

Adding a Database

In the **Database Management** window, click the **New** button. Another window will appear titled “Configure PostgreSQL Database”. Enter the name you would like to refer to the database as. If you are adding an existing database, check **This database already exists** and click the “Browse Databases” link to select the existing database.

The server, user, port, and password fields should not need to be changed. Do not change these values unless if you know what you are doing.

Then click the **Create** button and PokerTracker will create the database. Once the created, you should receive a confirmation window stating that the database was successfully created.



Removing a Database

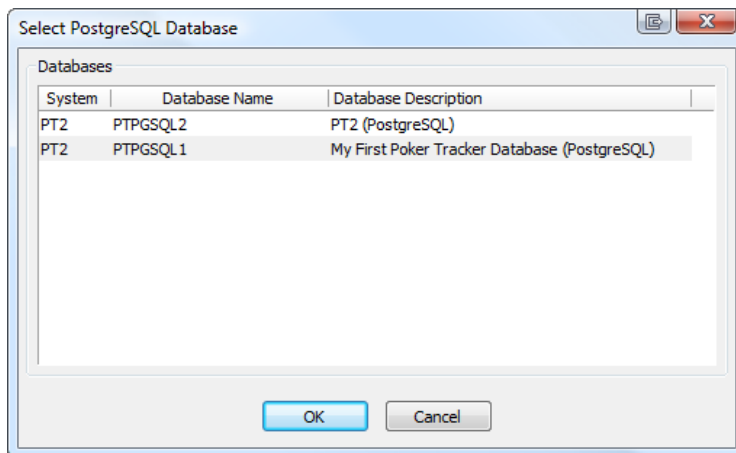
When you remove a database, the database is simply unlinked from PokerTracker. The database is still in existence and you can re-add it back into PokerTracker at anytime by following the steps in [Adding a Database](#). To remove a database, go to the **Database Management** window, left click to select the database then click the **Remove** button. You will be prompted to ensure that you want to remove the database. Click **Yes** and the database will be removed from the PokerTracker list.

Deleting a Database

When you delete a database, the physical contents of the database are permanently deleted. Once deleted, there is no way to recover or restore the database. In the **Database Management** window, left click to select the database to delete then click **Delete**. You will be prompted to ensure that you want to permanently delete the database. Click **Yes** and the database will be permanently deleted.

Converting a PT2 Database

To import a PokerTracker v2 PostgreSQL database to your active PokerTracker 3 database, click



Database in the main menu then go **Convert** and **Convert PokerTracker 2 Database**. A new window will appear that lists all of the PT2 databases on your computer. Select the PT2 database that you want converted to your active PT3 database and click **OK**. You will be prompted with a notice asking if you would like to continue. Click **Yes**. You can view the status of the conversion process via the **Import** tabs window.

Note: Currently, you can only convert a PostgreSQL database and hands where the hand histories have been saved in the database. To convert an Access database, you should convert your PT2 Access database to PostgreSQL within PT2 then convert this database within PokerTracker 3 or export the hand histories from PT2 using **Utilities** -> **Export Hand Histories to File**.

Database Maintenance - Housekeeping

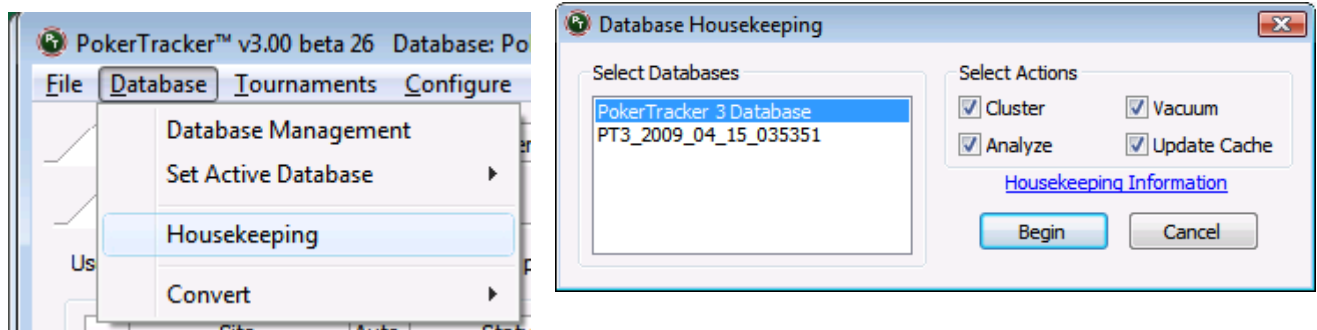
Routinely maintaining your PokerTracker database is the single most important thing that you can do to ensure that PokerTracker continues to run as efficiently and quickly as possible. Failing to properly maintain your database will lead to slow stat retrieval and general poor performance. At a minimum, you should analyze, cluster, and vacuum your database, and rebuild the cache at the recommended times mentioned below.

It is also important to maintain your hard disk to achieve maximum performance. To run the Housekeeping functions optimally you should have at least as much free space on the disk as your database uses. Defragmenting your hard disk regularly will allow things to run faster too. You should close down all your applications and stop the PostgreSQL service before defragmenting:

Start -> All Programs -> PostgreSQL 8.3 -> Stop Service.

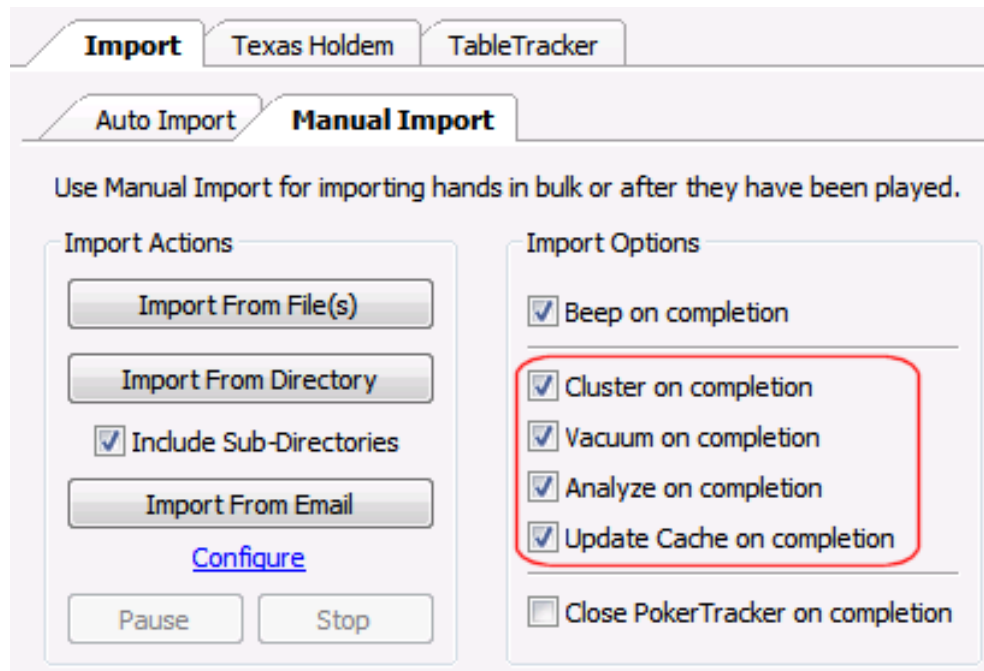
Start -> All Programs > Accessories -> System Tools -> Disk Defragmenter.

You can run the Housekeeping functions either at the end of a Manual import or by selecting **Database** from the main menu and then **Housekeeping**.



Analyze

When you analyze the database, PostgreSQL gathers important information about the database to optimize how your database is retrieved. At a minimum, you should analyze your database after every ten-thousand hands that you import. It is recommended to leave **Analyze on Completion** checked in your Manual Import windows so that the database is analyzed after every import. Otherwise, you can manually analyze the database via selecting **Database** in the main menu then selecting **Housekeeping**. The analyze process should not take very long to complete and is extremely beneficial.



Cluster

Clustering your database is similar to defragmenting your hard drive but even more important as databases fragment much quicker. You should cluster your database after your first manual import and then cluster at a minimum, every 100,000 hands after that. Ideally, you should cluster every 50,000 hands; however, that may not be practical. To automatically cluster after a manual import check **Cluster on Completion**. To manually cluster your database, select **Database** in the main menu then select **Housekeeping**. The clustering process is much slower than analyzing and vacuuming. Depending on the speed of your computer and the size of your database, this process could take a few hours.

Vacuum

Vacuuming your database reclaims free space on your hard drive after you delete data therefore it is only necessary to manually vacuum your database if you have deleted data. To vacuum your database, select **Database** in the main menu then select **Vacuum Active Database**. The vacuum process should not take very long to complete.

Update Cache

Updating your database cache allows PokerTracker 3 to retrieve statistics much faster and will make a huge difference to the performance of both reports and the HUD. The cache update takes a similar amount of time as analyzing and should be done at least as often; preferably after about every ten thousand hands imported or sooner.

Multiple Databases

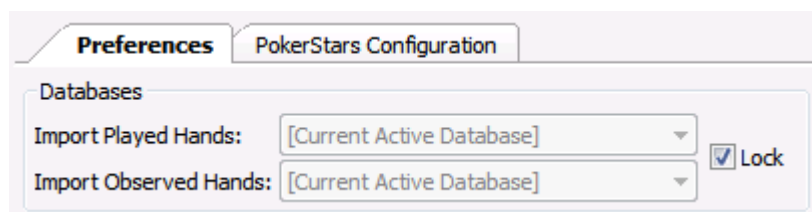
The PokerTracker 3 database was designed to efficiently handle millions of hands therefore you should not create separate databases for different sites, limits, etc. The only scenario where it is useful to have two separate databases is when storing observed hands into one database and played hands into another database.

Played vs. Observed Hands

Importing your observed hands into one database while importing your played hands into another database is useful for those users who datamine (gather hands from observed tables). Over time, you

could then delete your observed database while keeping the played hand database intact. To choose which database your played and observed hands are imported into, go to the **Import -> Auto Import -> Preferences** tab. Choose each database from the pull down menu for the corresponding hands.

Make sure that **Import Observed Hands** is checked so that PokerTracker imports your observed hand histories.



PokerTracker™ Help & Support

If you have any questions that are not answered in this guide, please search the PokerTracker forums. If your question is still not answered then contact support via the PokerTracker Support system and they will gladly answer your questions or further assist you.

PokerTracker 3 - Tutorials & Help Documentation

<http://www.pokertracker.com/products/PT3/docs/>

PokerTracker Forums

<http://www.pokertracker.com/forums/>

PokerTracker Support system

<https://www.pokertracker.com/support/>

© 2008-2009 PokerTracker Software, LLC. All rights reserved. PokerTracker and the PokerTracker logo are trademarks or registered trademarks of PokerTracker Software, LLC. All product names mentioned herein are trademarks or registered trademarks of their respective owners. The products described in this document are protected by U.S. Patents, foreign patents, or pending applications.