



PokerTrackerTM 3

Quick Start Guide

Product Version: 3.00 Build 4

Document Version: 1.01

Modified: February 17, 2009

Contents

Overview	2
Before You Start.....	2
Upgrading from a Previous Version of PokerTracker™.....	3
From PokerTracker™ v2	3
From PokerTracker™ 3.....	3
Installation	3
Configuration	4
Only on First Run.....	4
Poker Sites.....	5
Importing Hands	7
Auto Import.....	7
Manual Import.....	8
PokerTracker™ Help & Support	9

Overview

The installation of PokerTracker 3 is quick, easy, and automated. PokerTracker parses your poker sites hand history files and stores statistics and other hand information into a PostgreSQL database. If you do not have PostgreSQL installed on your computer you will need to download the PokerTracker installation file that includes PostgreSQL. Otherwise, you can download the smaller installation file which does not contain PostgreSQL.

Before You Start

It is highly recommend that you create an account on the PokerTracker website. This will allow you to participate in forum discussions and get personalized help via the PokerTracker Support system. Registration for the website only takes a few minutes and will save you a lot of time when you need assistance. If you decide to purchase PokerTracker, you are required to have an account prior to purchase. Click the “Register” button on the top-right hand corner of any page to begin the registration process.

Upgrading from a Previous Version of PokerTracker™

From PokerTracker™ v2

PokerTracker 3 is a completely different application than PokerTracker v2. You do not need to upgrade the software; instead you will need to do a full installation of PokerTracker 3. The way that PokerTracker 3 stores your statistics in the database has changed significantly since version 2. After installation, you can either re-import old hand histories that you have saved or you can use the automated conversion process documented in the “Database Management & Maintenance Guide”.

From PokerTracker™ 3

If you have already installed PokerTracker 3 and you want to upgrade to the latest release simply download the installation file (without PostgreSQL) from the PokerTracker website and run the install file. There is no need to uninstall the current version of PT3 prior to upgrading.

Installation

To install PokerTracker 3:

1. Download the "PokerTracker 3 - Holdem: Full Installation" file from the website
2. Run the PT-Install file.
3. Read the license agreement. If you agree, click “I Agree” to continue.
4. Choose the location where you would like to install PokerTracker then click “Install”.
 - a. Note: We recommend installing to the default location
5. PokerTracker has successfully been installed! Click “Close” to exit the installation.

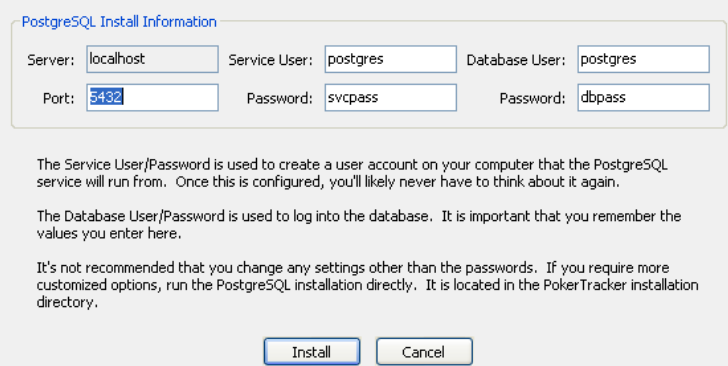
Configuration

Only on First Run

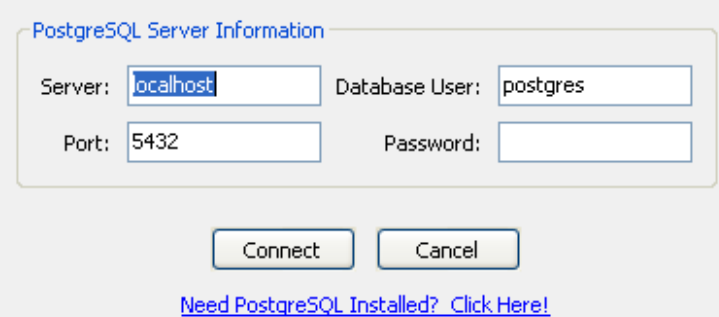
The first time you run PokerTracker 3 you will either be prompted to install PostgreSQL or connect to an existing PostgreSQL database, depending on whether PostgreSQL is already installed on your computer.

Installing PostgreSQL

If PostgreSQL is not installed on your computer, you will be prompted asking if you would like PokerTracker 3 to install PostgreSQL for you. Click “Yes” to continue. The next step is to configure PostgreSQL settings. Enter new passwords or use the defaults provided. (If you create new passwords, please remember them. PokerTracker support cannot recover your PostgreSQL passwords). Do not change the port unless if you know what you are doing. Then click “Install” to complete the installation process.



The screenshot shows a dialog box titled "PostgreSQL Install Information". It contains several input fields: "Server" (localhost), "Service User" (postgres), "Database User" (postgres), "Port" (5432), "Password" (svcpass), and another "Password" (dbpass). Below the fields, there is explanatory text: "The Service User/Password is used to create a user account on your computer that the PostgreSQL service will run from. Once this is configured, you'll likely never have to think about it again." and "The Database User/Password is used to log into the database. It is important that you remember the values you enter here." A final note states: "It's not recommended that you change any settings other than the passwords. If you require more customized options, run the PostgreSQL installation directly. It is located in the PokerTracker installation directory." At the bottom, there are "Install" and "Cancel" buttons.



The screenshot shows a dialog box titled "PostgreSQL Server Information". It contains input fields for "Server" (localhost), "Database User" (postgres), "Port" (5432), and "Password" (empty). Below the fields are "Connect" and "Cancel" buttons. At the bottom, there is a blue hyperlink: "Need PostgreSQL Installed? Click Here!".

Existing PostgreSQL

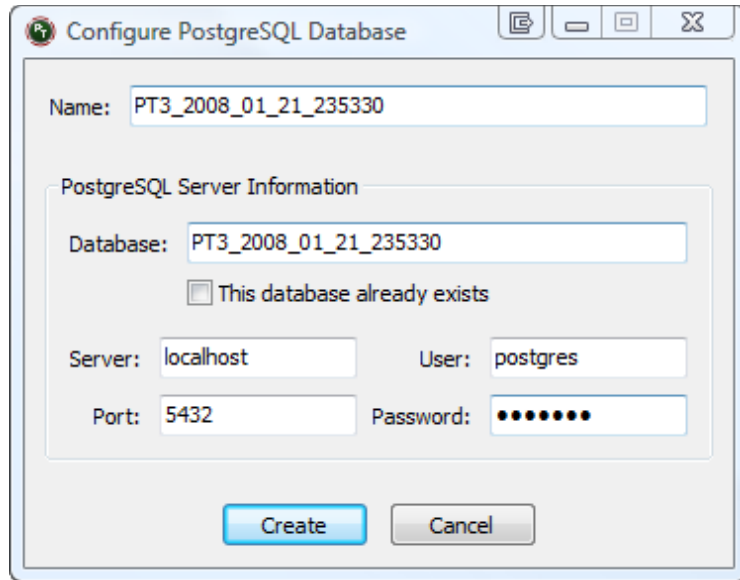
If PostgreSQL has previously been installed on your computer, you will be prompted to enter the PostgreSQL server information so that PokerTracker can connect. Enter your server, port, username and password (default values are provided). Then click “Connect”.

Your First Database

After you have installed PostgreSQL or connected to an existing server, you will be prompted to create your first PokerTracker 3 database. Enter the name you would like to refer to the database as. If you are adding an existing database, change the “Database” field and check “This database already exists”.

The server, user, port, and password fields should not need to be changed. Do not change these values unless you know what you are doing.

Then click the “Create” button and PokerTracker will create the database. You should then receive a confirmation window stating that the database was successfully created.



Poker Sites

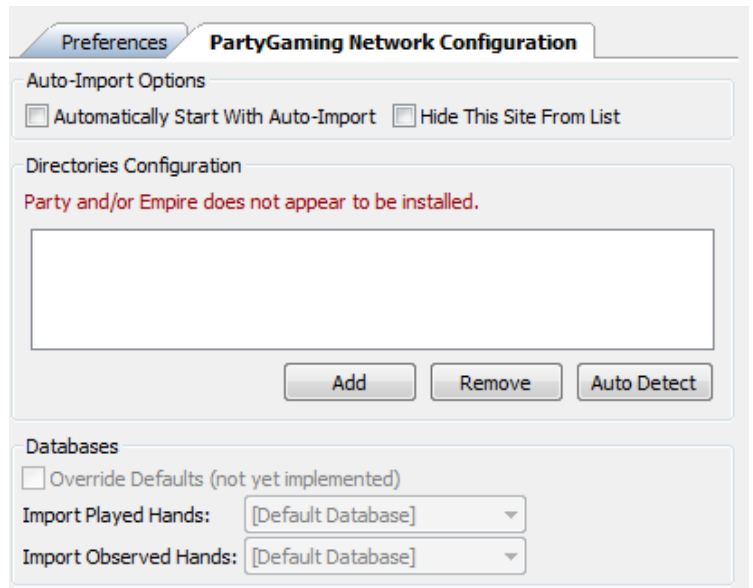
PokerTracker 3 should automatically detect the poker clients that are installed on your computer.



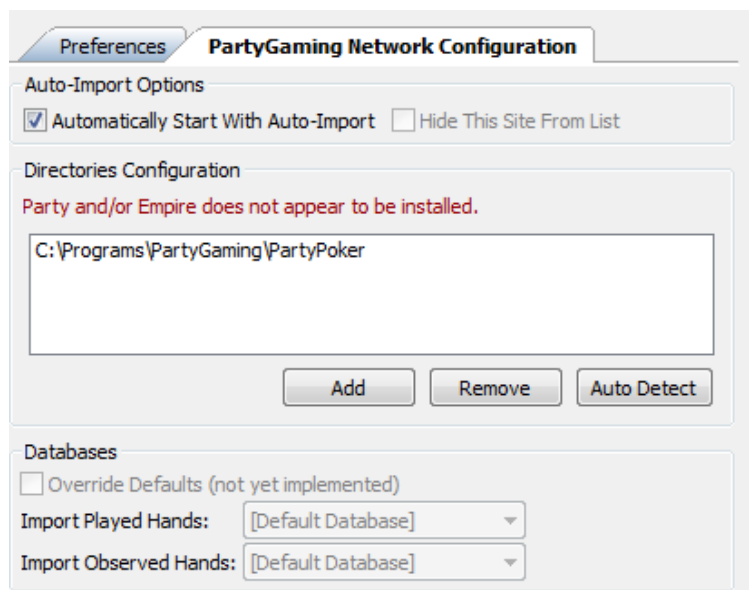
In the above screenshot, PokerStars and Full Tilt were automatically detected and configured. The PartyGaming Network was not detected. Either a PartyGaming poker client is not installed on your computer or PokerTracker failed to detect the installation, in which case, you will need to manually configure the site. If all of your poker clients are detected then no further configuration is needed and you can proceed to Importing Hands.

To configure one of the poker sites, left click the site name in the list shown above and a “Site Name Configuration” tab will be displayed next to your preferences tab as shown in the screenshot below.

As you can see in the screenshot, Party and/or Empire Poker do not appear to be installed. Click “Add” which will open a window to browse for folder. To add PartyPoker, browse to and select your main PartyPoker directory.



After you select the directory it should appear in the Directories Configuration list. Then check “Automatically Start with Auto-Import” so that PartyPoker hands are imported every time the PokerTracker auto-import is run.

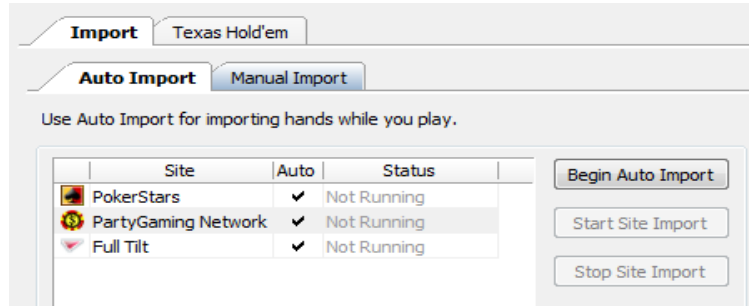


Importing Hands

Now that PokerTracker is properly configured, you are ready to begin importing your hands into your database. If you have hand histories from previous play that you want included in PokerTracker, you should do a manual import. Otherwise, you are ready to begin auto importing your hand histories while you play.

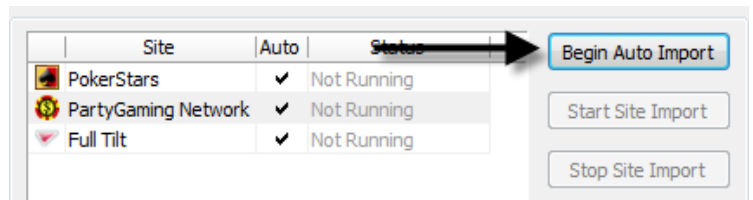
Auto Import

First, make sure that the site you will be playing on has a checkmark under the “Auto” field. If it does not, please read the “Configuration” section of this document.



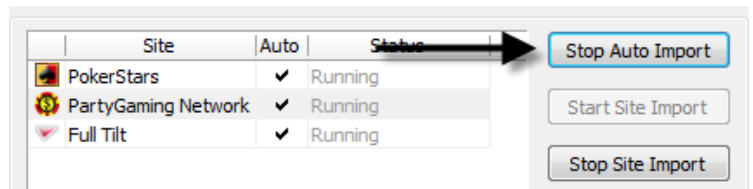
To begin your auto-import:

1. Click “Begin Auto Import”
2. Open your poker client and play
3. After a hand has completed, PokerTracker will immediately import the hand into your database.

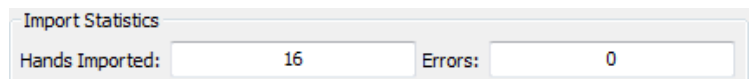


To end your auto-import:

1. Click “Stop Auto Import”

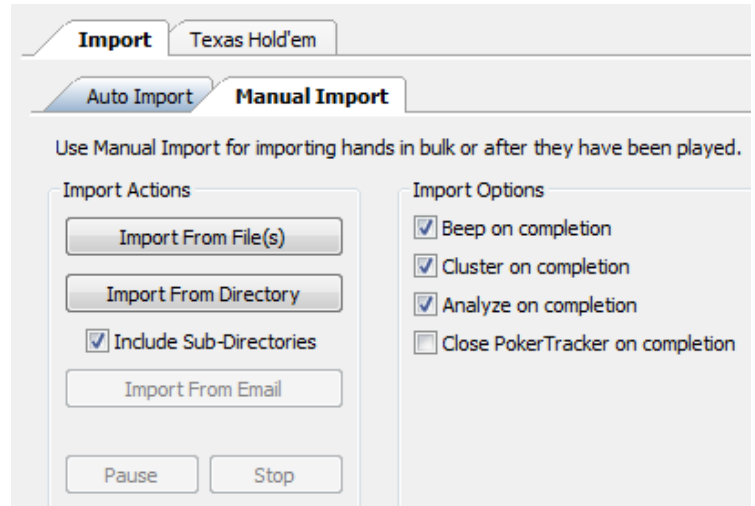


It is that easy! You can see how many hands have been imported and if any errors or warnings have occurred in the “Import Statistics”.



Manual Import

If you have hand histories for hands that you have previously played and want them imported into PokerTracker you should use the manual import. You can either import a single file, multiple files, or from a directory. To include hands in sub-directories, you will need to check "Include Sub-Directories". After selecting your files or directories the import will automatically begin.

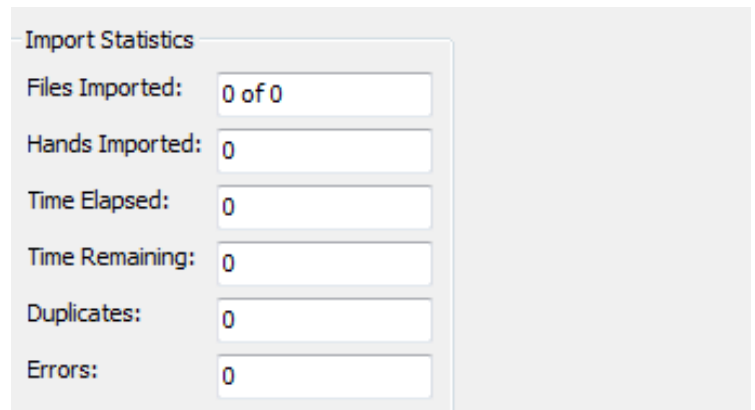


Important: You should always "analyze on completion" after a manual import.

Note: If this is your first manual import, you should "cluster on completion". Otherwise, it is recommended to cluster every 50,000 to 100,000 hands.

When the import is running, you can view the status and following statistics of the import:

1. Total number of "Files Imported"
2. Total number of "Hands Imported"
3. Time the import has been running
4. "Time Remaining" until the import finishes and import speed in hands per second (h/s)
5. Total "Duplicate" hands
6. Total number of "Errors" and/or warnings encountered during the import process



PokerTracker™ Help & Support

There are numerous help documents and tutorials to assist you in configuring and using PokerTracker. If you cannot find the answer you need via these resources, please search the forums. If your question or problem is not addressed you should then contact support using the PokerTracker Support system.

PokerTracker 3 - Tutorials & Help Documentation

<http://www.pokertracker.com/products/PT3/docs/>

PokerTracker Forums

<http://www.pokertracker.com/forums/>

PokerTracker Support system

<https://www.pokertracker.com/support/>

© 2009 PokerTracker Software, LLC. All rights reserved. PokerTracker and the PokerTracker logo are trademarks or registered trademarks of PokerTracker Software, LLC. All product names mentioned herein are trademarks or registered trademarks of their respective owners. The products described in this document are protected by U.S. Patents, foreign patents, or pending applications.