



PokerTrackerTM 3

Prima/MicroGaming Configuration Guide

Product Version: 3.00 Build 5

Document Version: 1.01

Modified: June 5, 2009

Contents

Overview	3
Before Auto Importing	4
Auto Importing Hand Histories	5
Configuring Preferred Seating.....	6
PokerTracker™ Help & Support	7

Overview

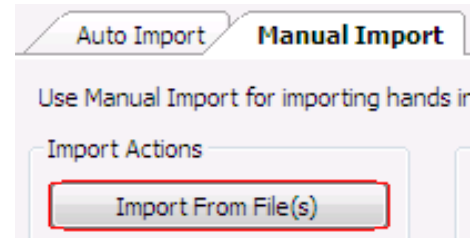
This guide is intended for users who wish to manually configure PokerTracker3 to import hand histories from sites on the Prima MicroGaming network in the event that hand histories are not automatically configured for import.

For information on installing and setting up PokerTracker3, see the [PokerTracker3 Quick Start Guide](#).

Before Auto Importing

MicroGaming uses a database file (*GameHistory.dat*) to store all your hand histories, rather than individual text files, and this file can get very large.

If you already have your MicroGaming software configured to save hand histories then before using Auto Import you should close down your MicroGaming poker site(s) and use the **Manual Import tab > Import From File** option to import all of your previously played hands from each of your sites.

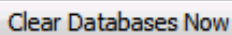


If you do this first import with Auto Import it will be very slow.

(See the 'Auto Importing Hand Histories' section below if you don't know where this file is.)

Once you have done the manual import (and checked the **Texas Holdem > Cash Games** and **Tournaments** tabs to make sure everything imported OK – click **Refresh** if you don't see the newly imported hands) you should clear the hand history database file.

To do this, configure the MicroGaming Auto Import options (see below) so that the GameHistory.dat files for every MicroGaming site is listed in Database Files Configuration and then click the **Clear Databases Now** button.

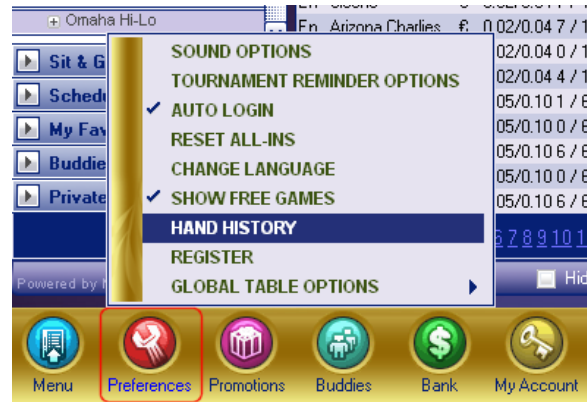
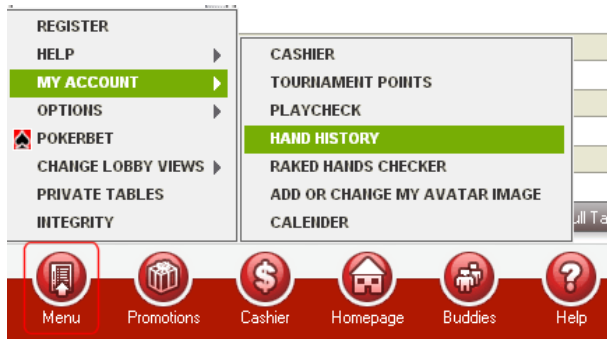
A rectangular button with a light gray background and a thin border, containing the text 'Clear Databases Now' in a dark gray font.

This will empty the MicroGaming hand history database file but will not affect your PokerTracker 3 databases at all.

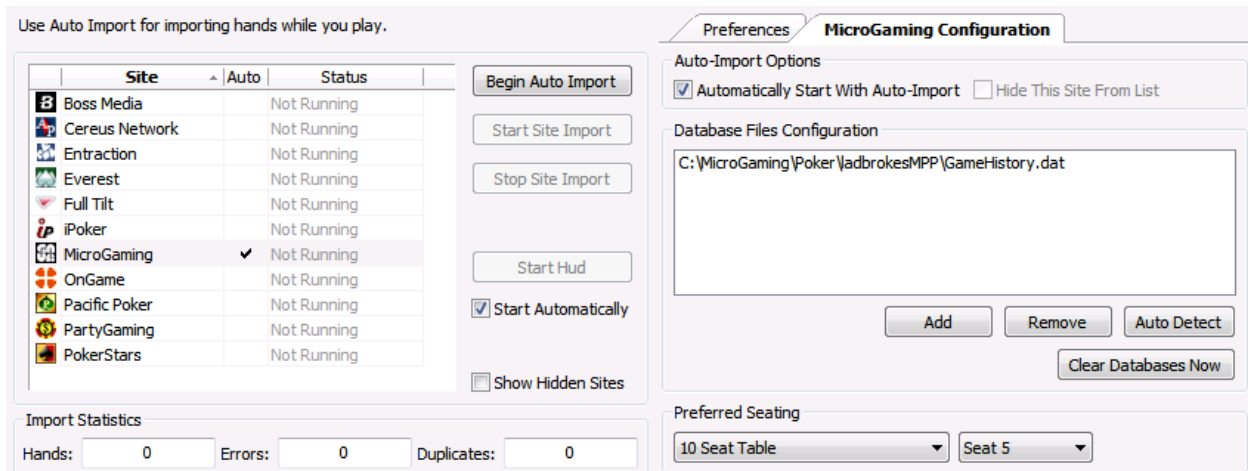
To avoid the hand history file getting too large and causing PokerTracker 3 to run slowly due to having to re-read all the old hands you should continue to use the **Clear Databases Now** button regularly.

Auto Importing Hand Histories

PokerTracker 3 may not be automatically configured to import hand histories from MicroGaming. You will need to configure your MicroGaming poker software to save hand history files as you play. There are many different MicroGaming skins with their own lobby layouts -- you need to access the **Hand History** window through the poker lobby menu either under **Preferences** or **Menu**.



On the **Auto Import** tab in PokerTracker 3, select **MicroGaming Network** from the site list on the left hand side then click the **MicroGaming Configuration** tab on the right.



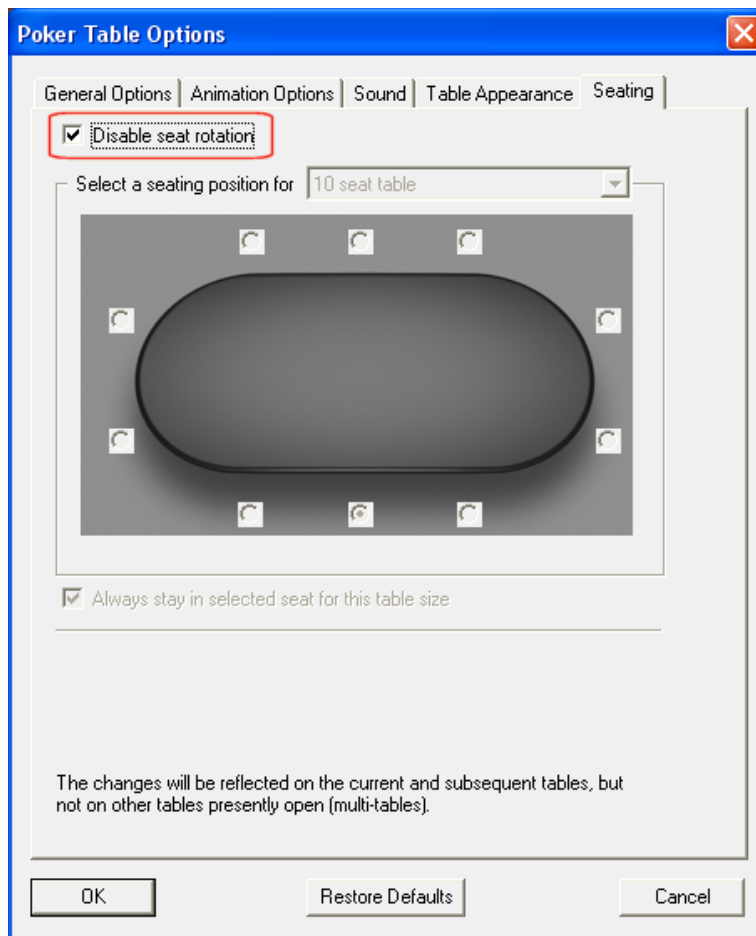
Tip: If you do not see the MicroGaming network listed, check the **Show Hidden Sites** option.

If you do not see your hand history (GameHistory.dat) file listed, click the **Auto Detect** button. This should add the correct file to the **Database Files Configuration**. If it does not, you can manually select the file using the **Add** button. If you play on more than one MicroGaming site, make sure that all of your sites' hand history (GameHistory.dat) files are listed. If you wish for PokerTracker 3 to start importing hands from MicroGaming whenever you start auto importing, enable the **Automatically Start with Auto-Import** option.

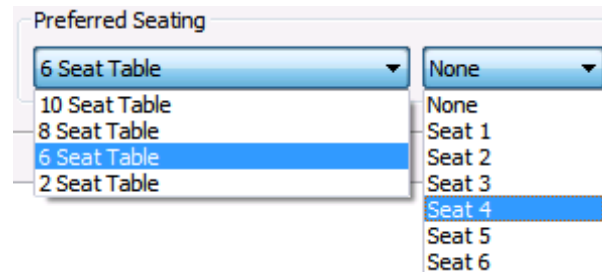
Configuring Preferred Seating

If you use the **Preferred Seating** option in your MicroGaming poker software (so that you are always shown in the same seat at every table) then you need to configure PokerTracker 3 to know your preferred seat.

To configure your preferred seat in the MicroGaming software, click the **Menu** button at the table and select **OPTIONS** to open your Poker Table Options window. Under the **Seating** tab, uncheck **Disable Seat Rotation**. You can then choose your preferred seat for each table size.



To configure this in PokerTracker 3, you use the **Preferred Seating** section on the **MicroGaming Configuration** tab.



PokerTracker™ Help & Support

There are numerous help documents and tutorials to assist you in configuring and using PokerTracker. If you cannot find the answer you need via these resources, please search the forums. If your question or problem is not addressed you should then contact support using the PokerTracker Support system.

PokerTracker 3 - Tutorials & Help Documentation

<http://www.pokertracker.com/products/PT3/docs/>

PokerTracker Forums

<http://www.pokertracker.com/forums/>

PokerTracker Support system

<https://www.pokertracker.com/support/>

© 2009 PokerTracker Software, LLC. All rights reserved. PokerTracker and the PokerTracker logo are trademarks or registered trademarks of PokerTracker Software, LLC. All product names mentioned herein are trademarks or registered trademarks of their respective owners. The products described in this document are protected by U.S. Patents, foreign patents, or pending applications.